



# Retail Store of the Year

Wolverine World Wide, Rockford, Mich.



Softlines (less than 5,000 sq. ft.)

## Merrell

Rockford, Mich.

Design: FRCH Design Worldwide, Cincinnati

In keeping with the attitude and personality of the brand, the new Merrell prototype brings the outdoors

in with a design that relates to customers' personal outdoor experiences and offers an exploration of the senses. Perimeter sliding-door fixtures hung with rustic-looking barn door hardware allow open stock on the floor, making the merchandise completely accessible to customers. Strategically placed outdoor graphics enhance the overall theme, as do fixture materials and decor accents. Items that might have been collected while wearing the products on display are featured on a curated wall.



Leeza Studio, Longueuil, Quebec

Softlines

(less than 5,000 sq. ft.)

*Honorable Mention*

## Verona Vibe

Gatineau, Quebec

Design: Ruscio Studio, Montreal

A dramatic design with an all-red color palette creates a sense of fashion and passion at Verona Vibe, while providing the ideal platform for showcasing hot footwear brands. The all-red motif extends from the flooring to the wall to the ceiling, making the 1,800-sq.-ft. a standout to passers-by. Black and white cut-out graphics make a powerful visual statement against the bold red background and help define the store brand to its hip, young demographic.



FRCH Design Worldwide, Cincinnati

## Department Store

### Liverpool Polanco

Mexico City, Mexico

Design: FRCH Design Worldwide, Cincinnati

A simple but powerful design solution provides Liverpool Polanco with an international sensibility and makes shopping at the remodeled store a captivating experience. The design creates a rhythm of salon-styled shop vignettes, with merchandise presented in unexpected ways. A double-height atrium with monumental columns connect the ground level with the mezzanine above, creating a dramatic central hub that acts as the visual heart of the 504,009-sq.-ft. store.

## Department Store

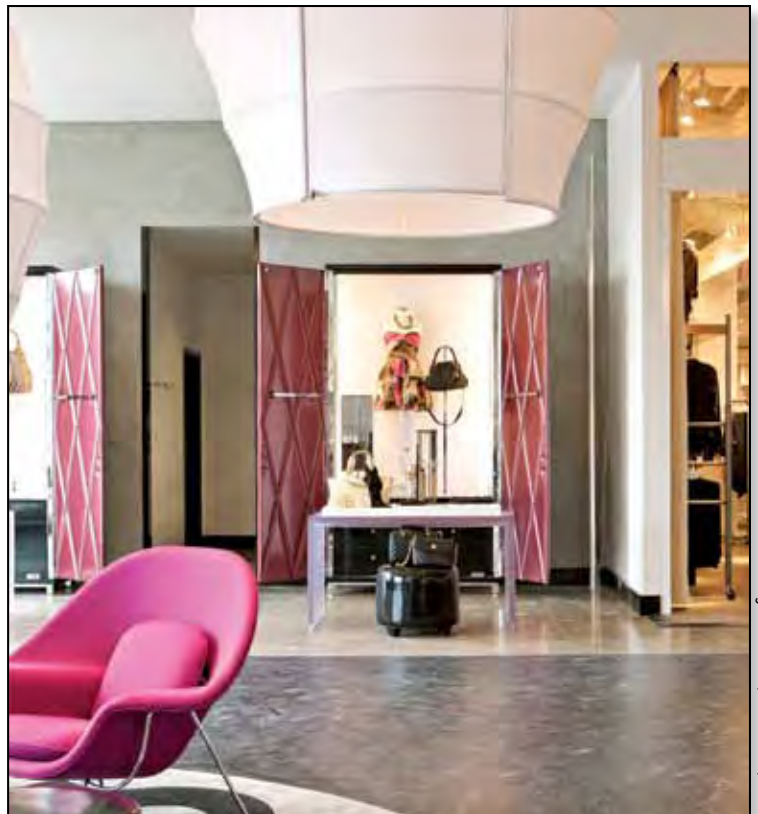
*Honorable Mention*

### Bloomingdale's

Santa Monica, Calif.

Design: Mancini•Duffy, New York City

Taking a design cue from the surrounding beachside community, the design team of Bloomingdale's used subtle references to capture the "beach chic" Southern California lifestyle. The 101,00-sq.-ft. store is an imaginative departure from Bloomingdale's larger units. Even the retailer's iconic black-and-white checkerboard floor is reinterpreted in stenciled concrete. Unexpected splashes of color, varied textures and lively contrasts make for a look of weathered elegance. The store's unique feel is evident throughout, from the mannequins that float overhead on a ceiling-mounted conveyor belt to the 6-ft.-high retractable Chinese lantern-styled pods that serve as dressing rooms.



Grey Crawford, Santa Fe, N.M.

# Retail Store of the Year



Lotte Design Division, Seoul

## International Department Store

### Lotte

Seoul, South Korea

Design: FRCH Design Worldwide, Cincinnati

A remodel has given new style and buzz to Lotte, transforming the 500,000-sq.-ft.-plus department store into a fashion-forward shopping destination with broad appeal. The modern aesthetic is defined through classic colors, natural elements and patterned materials. Understated, elegant finishes appeal to the classic customer, while playful colors, fun display and organic materials encourage younger shoppers to linger.

## International Department Store

*Honorable Mention*

### Lotte

Busan, South Korea

Design: ID & Design International, Fort Lauderdale, Fla.

Located in the bustling Gwangbok harbor district of Busan, South Korea, the 650,000-sq.-ft. Lotte offers 11 floors of up-to-the-moment fashions for affluent urban shoppers. Inspired by the waterfront locale, the design team created a central atrium of kinetic architectural forms in a twisting motion that frames a central sculpture of 10,000 aluminum, fish-like forms spiraling upwards. Theatrical use of lighting throughout the space reinforces the water theme.

